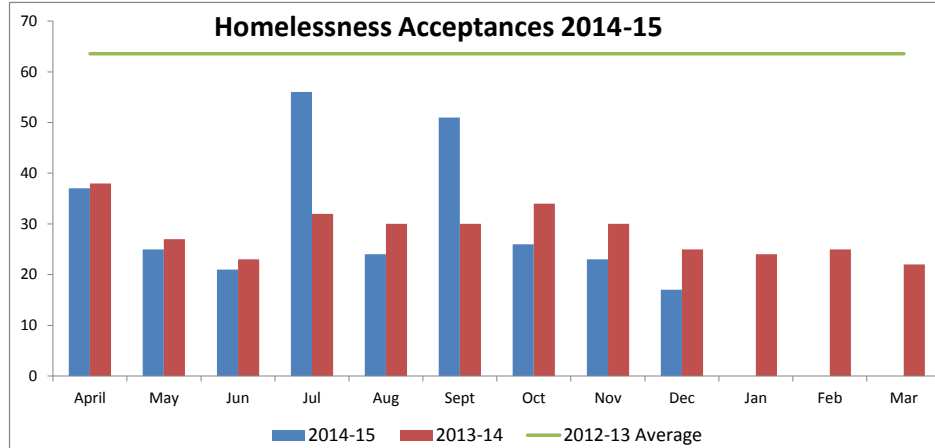
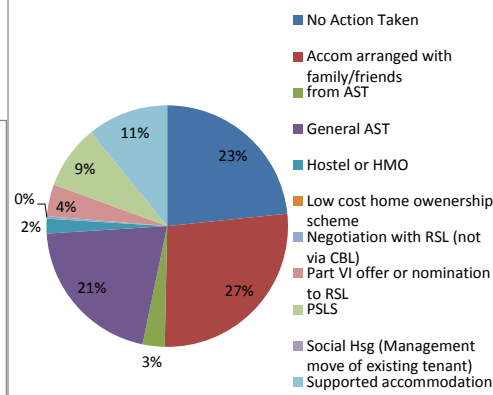


Housing Support - Performance Framework December 2014

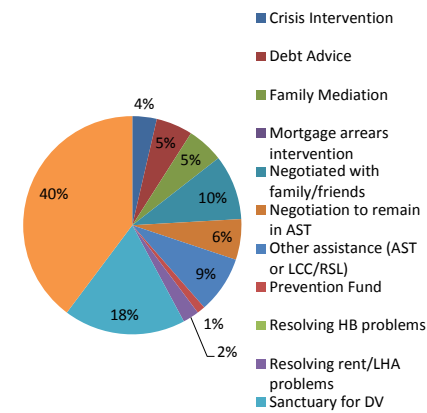
In December, homeless acceptances has fallen to 17 and remains lower than 2013/14's monthly average of 28 and 2012/13's monthly average of 64.



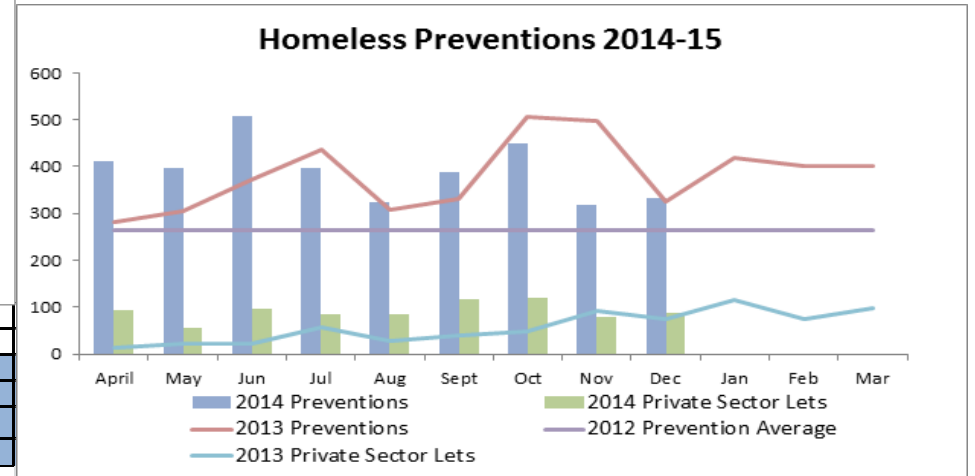
Preventions Dec 2014 - Planned Moves



Preventions Dec 2014 - Stay Put

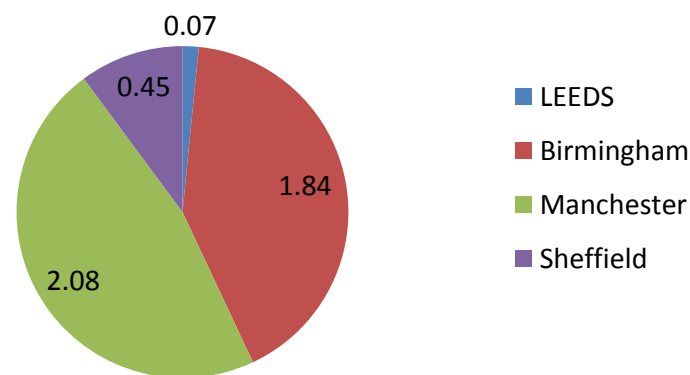


At 333, December's preventions exceed 2012/13's monthly average of 265. Following the service being transferred in-house, preventions through Young Person's Intervention have increased from an average of 19 in 13/14 to 38 to date in 2014/15.

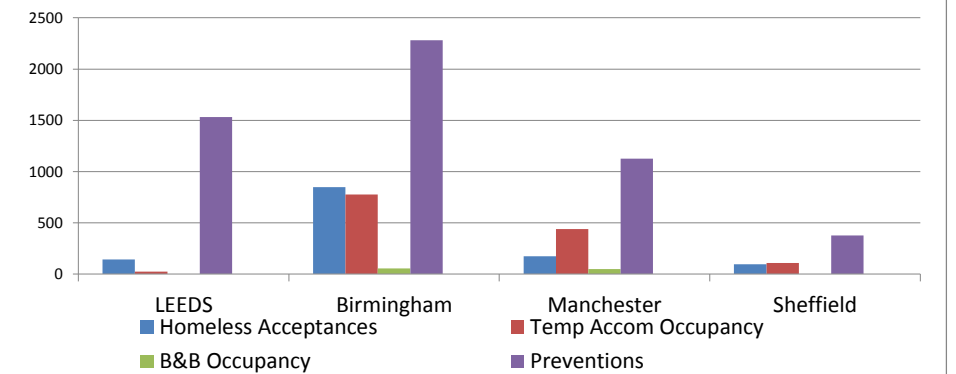


	2014-15						
	June	July	Aug	Sept	Oct	Nov	Dec
Total Temp Accom Occupancy	128	152	137	134	134	137	127
Total Households with dependents	65	72	70	65	70	72	19
Total Number Children	106	147	143	134	138	149	141
Total 16/17 Year olds:	10	11	5	5	6	6	5
Of which:							
Self-Contained (Total)	72	75	70	70	75	72	68
of which Families in PSL	0	0	0	0	0	0	0
of which Families in HA	45	50	51	47	49	50	46
of which other H/Holds in PSL	1	2	2	4	2	1	1
of which other H/Holds in HA	26	23	17	19	24	21	21
Number children in PSL	0	0	0	0	0	0	0
Number children in HA	77	101	101	94	94	102	99
B&B (Total)	0	0	0	0	0	0	0
of which Families	0	0	0	0	0	0	0
of which other H/Holds	0	0	0	0	0	0	0
Hostel (Total)	37	47	42	40	35	40	37
of which male	25	32	31	35	22	27	25
of which female	5	6	6	0	7	7	7
of which young people	7	9	5	5	6	6	5
of which Families	0	0	0	0	0	0	0
Refuge (Total)	22	25	25	24	24	25	22
of which Families	20	22	19	18	21	22	19
of which Single female	2	3	6	6	3	3	3
Number of children	29	46	42	40	44	47	42

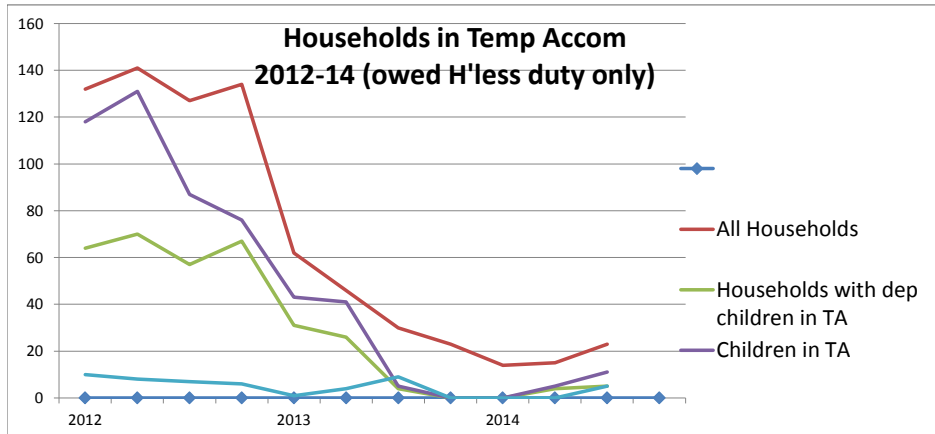
TA per 1,000 households (July-Sept 2014)



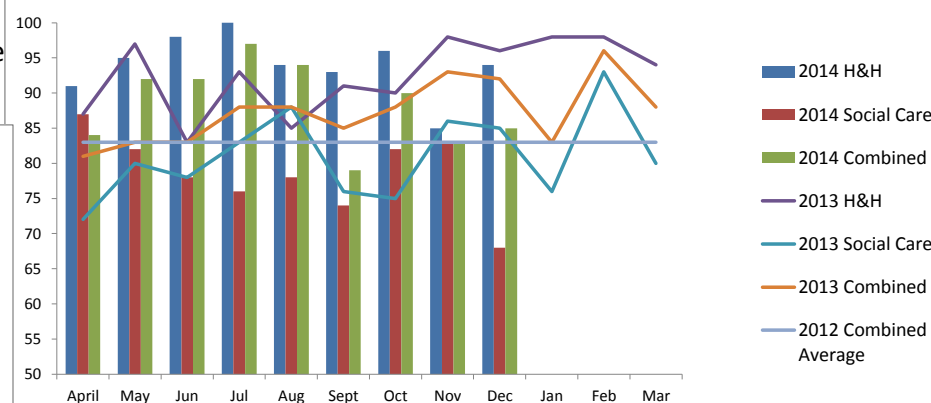
Core Cities Comparison (July-Sept 14)



Vacant units in self-contained properties are being used to accommodate looked after children aged 16 - 21 years old as part of joint working with Children's Services and Housing Options. Close working with Flagship is ensuring young people do not need to go into hostels and wherever possible more suitable accommodation is secured.



% Major Adaptations within Target



Health and Housing performance has improved significantly, moving from the 50th percentile in 2010/11 to the 90th currently, despite more demanding targets that include shorter timescales to complete works. The % cases not completed are often extensions with in-built delays

During December, there were no unauthorised encampments. There is 1 negotiated stopping site known as Kidacre in Leeds. A 3 year temporary planning application has been approved for 10 caravans.

New Unauthorised Encampments & Tolerated Sites 2014-15

